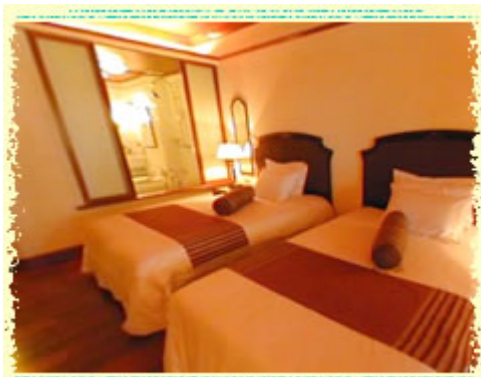


This 207-room colonial style beach-front resort is set in magnificent tropical gardens just two and a half hours from Bangkok by car and 30 minutes by air. It is both by the sea, yet in the city centre with extensive conference, incentive and meeting facilities, spa and fitness centre. A truly deluxe resort property with six nearby golf courses to chose from.

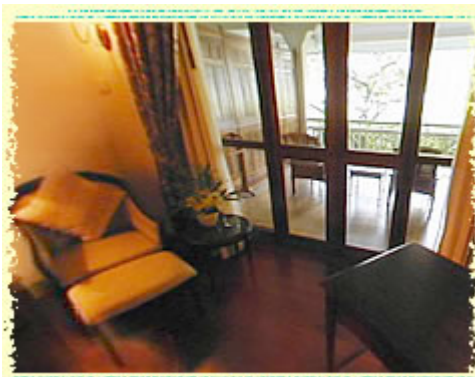
Sofitel Central Hua Hin Resort is one of Southeast Asia's most romantic hotels. The hotel's colonial structure, lovingly preserved, evokes a bygone period.



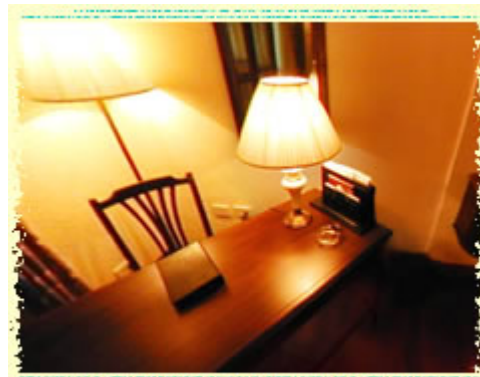
Sofitel Central Hua Hin Resort has 207 luxurious appointed rooms and suites. High ceilings, period furniture and elegant detailing blend together to create a hotel of unsurpassed luxury. The decor is rich polished hardwood softened by the warm tones of Thai silk, in a style evoking the spirit of the 1920s.



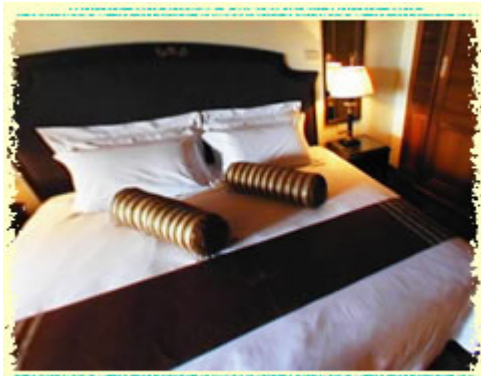
Deluxe Room



Deluxe Room



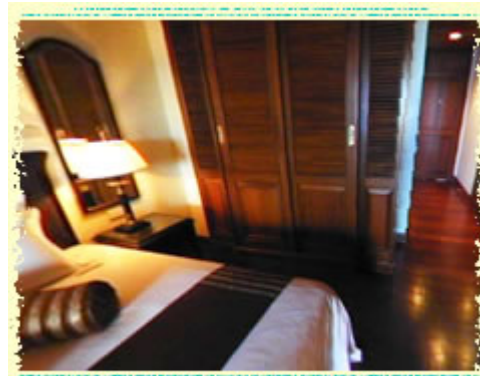
Deluxe Room



Superior Room



Superior Room



Superior Room



- :: Air conditioning
- :: Hair dryer in room
- :: IDD telephone
- :: Mini bar
- :: Private Balconies

- :: Radio channels
- :: Radio in room
- :: Satellite TV and Cable TV
- :: Shower
- :: Television

Bathroom fittings : Bath room with separate bathtub and shower stall



» B A R S

ELEPHANT BAR :

Try one of our original cocktail creations in air-conditioned comfort and listen to your favourite tunes played by our pianist.
Opening hours : 10.00 - 01.00



GARDEN WING POOL BAR :

This bar is located in the garden wing and serves drinks, snacks and light meals.
Opening hours : 10:00-18:00



MUSEUM TEA CORNER :

High-quality tea, coffee and pastries are served outdoors.
Opening hours : 10.00 - 19.00



RAJPRUEK LOUNGE :

A cosy lounge in our garden wing. Enjoy a full American breakfast buffet or a snack in the afternoon.
Opening hours : 10.00 - 18.00



SATCHMO CLUB :

Satchmo club offers live entertainment with easy listening music.
Opening hours : 21:00-01:00



WETSET RAILWAY POOL BAR :

This bar is close to the beach and serves drinks, snacks and light meals.
Opening hours : 10:00-18:00

» RESTAURANTS

PALM SEAFOOD PAVILION :

Enjoy a delectable array of fresh seafood in our enchanting beachfront restaurant. The Palm Seafood Pavilion is Hua Hin's unmatched premier fine dining venue.
Opening hours : 19.00 - 22.30 hrs.



RAILWAI RESTAURANT :

Foreign cooking with some Thai specialties.
Opening hours : 6.30 - 23.30 hrs.



SALATHAI RESTAURANT :

Try the authentic flavours of old Siam in our traditional Thai Restaurant, nestled amongst tropical gardens, waterfalls and fish ponds in our historical Thai Village at Central Hua Hin Village, just across the road.
Opening hours : 11.00 - 22.30 hrs.



PALM TERRACE (SNACK) :

Stay cool by the pool at Palm Terrace, the ideal venue for a light bite at lunch time. Try our daily specials and fresh seafood for a real taste of the Orient.
Opening hours : 10:00-19:00

HAGI JAPANESE RESTAURANT :

Enjoy traditional and modern Japanese cuisine, live cooking, teppanyaki and our sushi counters.
Opening hours : 16:00-23:00



- :: Fitness Centre
- :: Outdoor unheated pool
- :: Jacuzzi
- :: Golf putting green
- :: Discotheque / Night club
- :: WIFI Wireless Internet access
- :: Dry cleaning
- :: Porter
- :: Children Club 6 to 12 yrs old

- :: Outdoor playground for children
- :: Valet parking
- :: Bus/Coach park area
- :: Private outdoor parking
- :: Outdoor private closed parking
- :: Reduced mobility facilities
- :: 24 hour security staff
- :: Comply with Htl Safety Act 1990
- :: Smoke alarm in public areas

